

Whittlesea Historical Society Inc.

Incorporation No. A0017979G ABN: 46 019 570 463

PO BOX 241, Whittlesea, Victoria, 3757



Covering news & history of the City of Whittlesea, outer northern suburbs of Melbourne

No. 31

WHS Executive Committee

President

Barbara Miller

Vice President

Ross Mugavin

Treasurer

Margaret Mann

Secretary

Karen Wilson

Contact Us

PO Box 241, Whittlesea, Vic, 3757

Website www.whittleseahistoricalsociety.org.au

Email whittleseahistorical@gmail.com

Facebook

www.facebook.com/whittleseahistoricalsociety

Bank Details

Whittlesea Historical Society

BSB 063 855

Account No. 10028927

President's Report

As the incoming President of the Whittlesea Historical Society, I welcome you to the latest edition of our newsletter, marking the beginning of a new era for the WHS. Our thanks go to the outgoing committee for their service to this great group. Some of these members have been long-term committee members, with involvement going back over many years.

The new committee blends experience with enthusiasm, providing a broad range of skills which will give us a fresh perspective for the coming year.

2023 has been a year of activities and progress for the WHS, with a seminar, a cemetery tour, fundraising events, displays, and collaboration with other community groups. The attendance at the seminar held in June at Whitehaven Receptions showed that interest in local history is strong, and we plan to build on this by involving the community at many levels in the coming year.

Our plan is to have a strong social media presence, to offer a range of exciting events and activities for members and the community, and to welcome new members enthusiastically. If you have an interest in local history, please feel free to contact us and join our group. We promise a program of events, activities and sharing of knowledge.

Keep your eyes on our Facebook page for the latest information about what's happening in the WHS, and we hope to welcome you soon.

Barbara Miller, WHS President.

New WHS Members

Whittlesea Historical Society would like to welcome Hilda Burns as our newest member. We look forward to your contribution towards the society.

Recent Events

Tram Café, Diamond Creek

A huge thank you to Matt Christie, Margaret Mann, Michael Trinidad, Karen Wilson, Barbara Miller, Wendy Lowry, Angela Roper and Albert Miller for helping at the Tram Café in Diamond Creek.

We can report that the WHS raised \$2000 over 4 weekend sessions at the Diamond Creek Rotary Tram Café. Managers prepared the food, and WHS members took orders and delivered food to customers. It was a great opportunity to fly the flag for WHS and talk to customers about our activities.



The location of the Tram Café is within a beautiful natural linear park in Diamond Creek, with an amazing adventure playground and an off-leash dog park. Many thanks to Matt Christie for initiating this fundraiser. We hope to continue this collaboration with Rotary next year.

Bunnings BBQ - Mernda

Our Bunnings BBQ fundraiser was on the day before the Grand Final, which meant that we had lots of customers and earned \$743.60 for the WHS after costs. The generosity of the Whittlesea Men's Shed was much appreciated, as they did all of the organisation and supported us in our first Bunnings fundraiser.

Many thanks to our volunteers: Albert Miller, Bruce Batten, Christine Stonehouse, Barbara Miller, Wendy Lowry, and Gin Greenwood. Thanks also to the Whittlesea Men's Shed and to Bunnings for making this event possible. We would also like to thank Bunnings Mernda for the supply of storage boxes for the safe keeping of WHS records and collections.

Whittlesea Show – WHS Photograph Display

The WHS mounted a photographic display at the Whittlesea Show in November. Photos dating from early days to more recent times showed a cross section of buildings, people, farming practices and events.

Interest in the display was enthusiastic with many viewers pondering over the photos endeavouring to identify locals, friends and family. Recalling past times and events proved to be a real talking point between people. Many of the photos were from the WHS collection with a number also being made available by David Ovenden.

Thanks to those within the society who helped mount and 'man' the display.

Memorial Dedication for Lieutenant Colonel Robert Garrick Wilson

On Remembrance Day, a Memorial Stone was unveiled by Wilson's granddaughter, Margaret Nihill at the Soldier's Memorial, Church Street, Whittlesea. This was held to recognise and unveil the Memorial and to Commemorate the dedicated service of previously forgotten Whittlesea resident, Robert Garrick Wilson for his selfless service to his country during the First World War, even to the extent of his own death which occurred in Egypt during the ceremony at the Official Opening of the Canteen on 9th February 1916.

We thank Lindsay Mann, WHS life member for his research and work associated with the day.



Yan Yean Reservoir – 170 years old

Yan Yean Reservoir is the oldest water supply for the city of Melbourne, Victoria, Australia. At the time of its completion in 1857 it was the largest artificial reservoir in the world. It is 30 kilometres north of the city within the eponymous locality of Yan Yean, and is built on the Plenty River, a tributary of the Yarra River. An embankment 9.5 metres high holds back 30,000 ML of water.

The reservoir is managed by Melbourne Water as part of the water supply system for Melbourne.

The reservoir took four years to construct at a cost of £750,000. Other sources estimate the cost of the project to be £1,017,087. Most of the pipes were imported from London. It was designed by James Blackburn, an English civil engineer and former London sanitary inspector who was transported to Tasmania as a convict following charges of embezzlement. After being pardoned he came to Melbourne in 1849.

The following is an extract of an article relating to the beginning of creating the Reservoir.

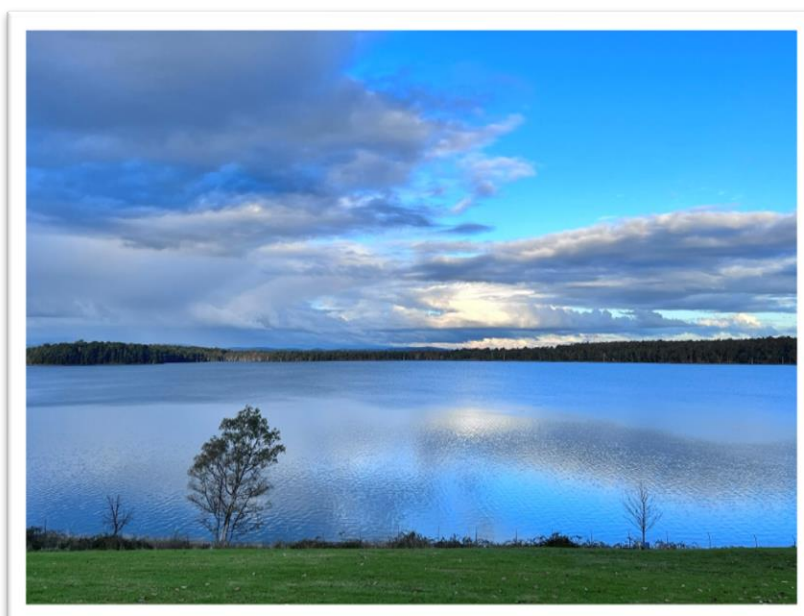
The Argus, Tuesday 20 December 1853

Yan Yean Reservoir

The first clod of the new reservoir, to be constructed at Yan Yean, on the Plenty, under the Water Commission, will be turned with the usual ceremony today. Carriages will attend at the Criterion Hotel, at eight o'clock AM, for the conveyance of the visitors who are invited by the contractors.

The party is expected to arrive at the ground by twelve and about half an hour after, the business of the day will be commenced, and the first turf will be turned by His Excellency, if he be able to attend, or, in his absence by the Mayor, and the proceedings will conclude with a collation.

The contractors for the work, who are the hosts on this occasion, are Messrs Martindale and Steele, and not Armidale as stated yesterday by a clerical error.

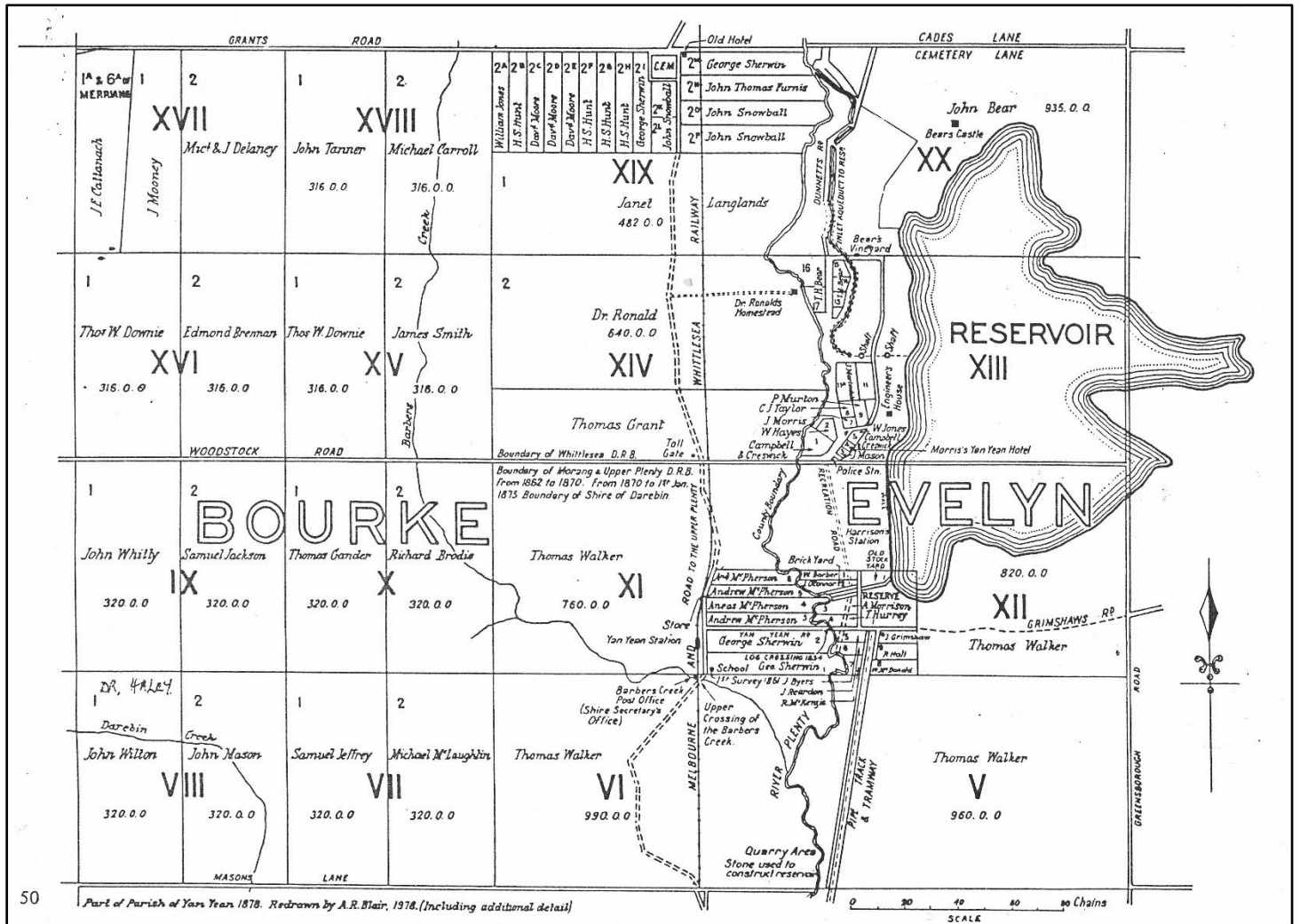


Yan Yean Reservoir
(WHS Photo PD0780)

https://en.wikipedia.org/wiki/Yan_Yean_Reservoir

<https://trove.nla.gov.au/newspaper/article/255612520?searchTerm=%22Yan%20Yean%20Reservoir%22>

Historical Map of Parish of Yan Year, 1878



Part of Parish of Yan Year
(Photo courtesy of State Library of Victoria)

Historical Newspaper Articles

Kilmore Free Press, Thursday 24 September 1936

Pastoral Pioneers

Each week the "Australasian" publishes the history of Pastoral Pioneers of this State. No. 141 of the series relates to The Beveridges, and reads as follows:

On December 4, 1839, the Superb, which had cleared out from Greenock five months before, sailed into Port Phillip with Andrew Beveridge and his wife and family on board. There were five sons, Andrew, Peter, George, Kilgour and Jack, and several daughters. A month or two after his arrival, Beveridge established a cattle run named Woodburn, at Mercer's Vale (now Beveridge), and a little later he opened the Hunter's Tryste Inn, which he kept till 1848.

In 1842 he acquired and stocked the Dean, which he placed in charge of his sons, Andrew and George. Robert McDougall, afterwards of Shorthorn fame, then happened along at the Tryste Inn. McDougall had been taking up land west of the Loddon for Curlewis and Campbell, of Sydney. While at the Inn he so optimistically described the northern country he had seen that the Beveridge boys were all agog to try their luck in the north. McDougall promised his aid and guidance.

A party was soon formed. With McDougall as leader, the party consisted of Andrew and Peter Beveridge and James and Edmund Kirby. With about 900 head of cattle, of which the Kirbys owned 350, they set out for the north. Durham Ox, Reedy Lake, Lake Boga were all passed. Even Swan Hill was not considered good enough. Then a halt was made at Tyntynder, some 10 miles lower down, and a homestead was erected there. After a visit by the chief protector of aborigines, who ordered a bullock to be killed and given to the blacks, everything went wrong. The blacks became hostile, and murdered young Andrew Beveridge. Andrew Beveridge, senr., then went up to Tyntynder, and took Kilgour, George and Jack with him. He left the Dean run in charge of a son-in-law. He remained at Tyntynder until 1866, when with Kilgour he re-turned to the Kilmore district; but George, Peter and Jack remained on the Murray, where they added Mount Myall, Piangil, Burra Burra and Ultima to their holdings.

Andrew Beveridge, senr., was a highly cultured man. Andrew, junr., took his M.A. degree at Edinburgh, just before sailing in the Superb for Australia. Peter was the author of several accounts of the lower Riverina and the aborigines. All the Beveridges had the flair for literature Kilgour gained some notice as a poet.



The Hunters Tryste Inn, Beveridge
(WHS Photo PD0795)

<https://trove.nla.gov.au/newspaper/article/58107534?searchTerm=%22Hunters%20Tryste%20Inn%22#>

Chris Scull's Facebook - Thomastown – Lalor – Epping Area Local History

My story.

Lots of new members, so I will tell you all a little bit about my family history in the area.

My family moved here 50 years ago in 1973 and are still living at the same residence. My father Tony worked for Julius Marlowe shoes in Northcote for many years before becoming a TAFE teacher, working at Collingwood and later Coburg. My mum Faye was a homemaker who made some money on the side cleaning. My older sister Lisa and younger brother Robert and I all attended Lalor East Primary and then went to Lalor High.

After school I worked at the Herald and Weekly Times for eight years before a brief stint on the trams and then moved into superannuation and banking in customer service roles. I also did some local factory work and a little retail.

My main reason for starting this group was to share photos and stories of the local area. I am not a historian as such, more a collector of stories and images. Most of the content here comes from copies of the Whittlesea Post which I get from Mill Park library, or as listed with the photos.

The photo below shows my sister outside our house back in 1973.



Old Time Recipe

Yan Yean Cookbook, 1978

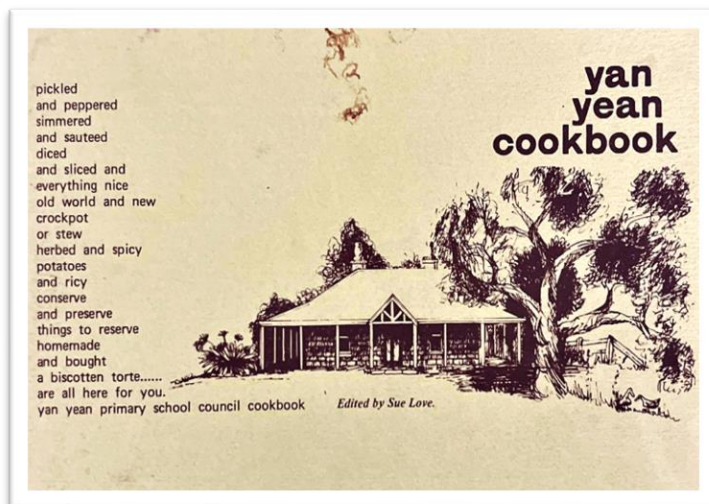
POLKA DOT MACAROONS

*3 egg whites
12 level teaspoon salt
3/4 cup sugar
3 cups cornflakes
1 packet chocolate pieces
1 teaspoon vanilla*

Add salt to the egg whites and beat until the mixture forms soft peaks. Gradually add the sugar and beat until the mixture is stiff and glossy.

Fold in the remaining ingredients. Drip in teaspoons on to a greased tray about two inches apart. Bake in a very slow oven until dry. Cool slightly before removing from tray. This quantity makes about two and a half dozen macaroons.

Madge Eadan



WHS Xmas Lunch & General Meeting

The Whittlesea Historical Society wishes to invite you to our Christmas break up lunch with a General Meeting to follow afterwards.

Whittlesea Bowls Club
101 Church Street, Whittlesea

Sunday 10 December 2023
12:30pm Lunch in the Sports Bar, followed by General Meeting at 2:00pm

Please email whittleseahistorical@gmail.com to register your attendance.

We look forward to seeing you all, and wish you a merry Christmas and a happy New Year.

We sincerely thank the Whittlesea Bowling Club for hosting our meetings throughout the year.

The Whittlesea Historical Society wishes to thank the following sponsors



Whittlesea Bowling Club



Diamond Creek Rotary Tram Café



Bunnings Mernda Store